

Installation Manual



SYSTEM:
Private



Tudelu®

TABLE OF CONTENTS

PRE-INSTALLATION CHECKLIST:	
- BOXES CHECKLIST	4
- TOOLS CHECKLIST	5
BRACKETS:	
- INSIDE THE BOX	6
- INSTALLATION	7
HOUSING UNIT:	
- INSIDE THE BOX	8
- INSTALLATION	9
- LASER CHECK	10
SIDE GUIDE:	
- INSIDE THE BOX	11
- INSTALLATION	12
TUBE UNIT:	
- INSIDE THE BOX	14
- INSTALLATION	15
POWER / REMOTE CONNECTION	16
WALL PANEL:	
- INSIDE THE BOX	17
- INSTALLATION	18
MOTOR LIMITS	22
HOUSING COVER	23
FINISHING BRUSH	24
MOTOR PROGRAMMING	25

BOXES CHECKLIST

Before getting started, make sure you received each of the following boxes.



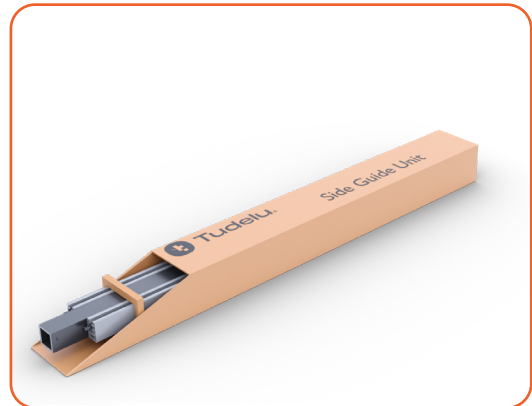
Housing Unit/s*



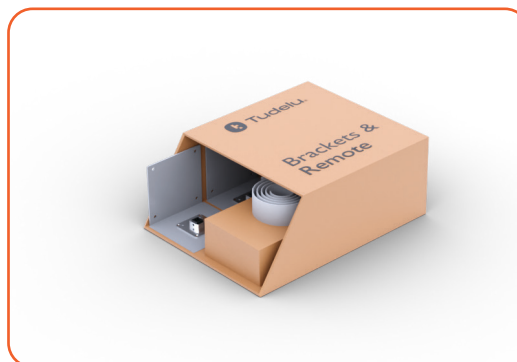
2x Tube and Bottom Bar



2x Wall Panel



2x Side Guide



2x Brackets & Remote

*amount depends on the length of your specific system

TOOLS CHECKLIST

These are the tools you'll need to install your system.



Laser



Flat screwdriver



Drill bits/
Hex Head Bits



Tape measure



Ladder



Drill



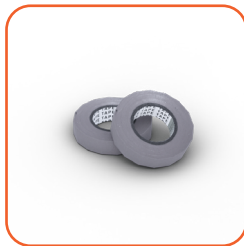
Leveler



Extension cord



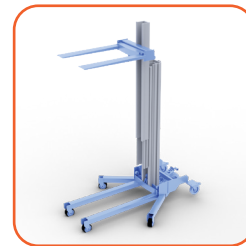
Plier



Duct tape

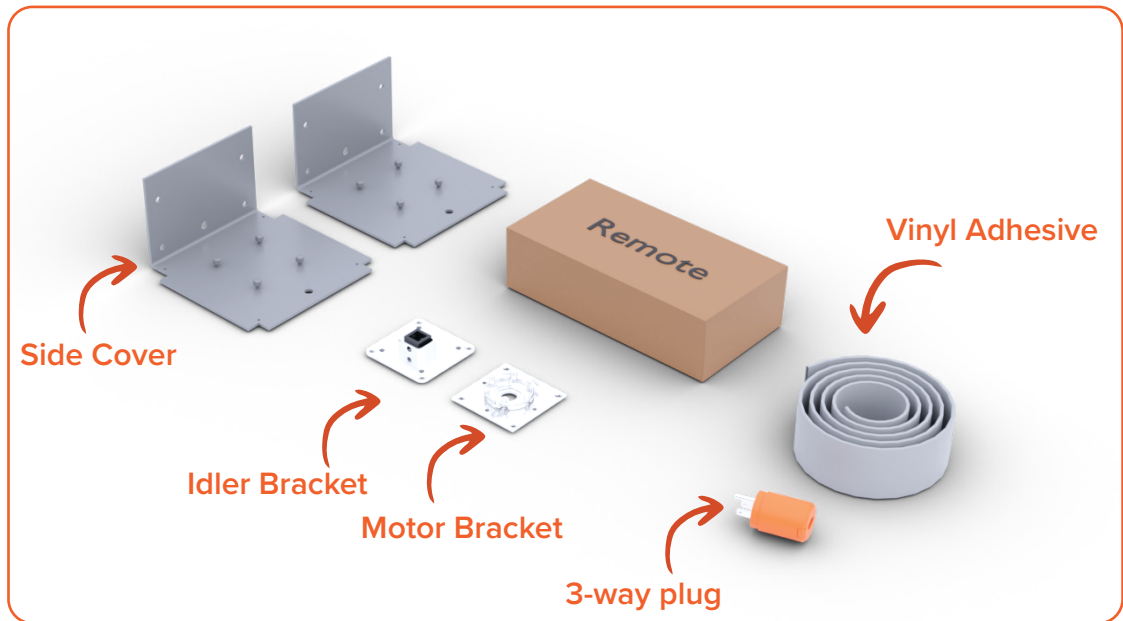


Saw
With aluminum blade



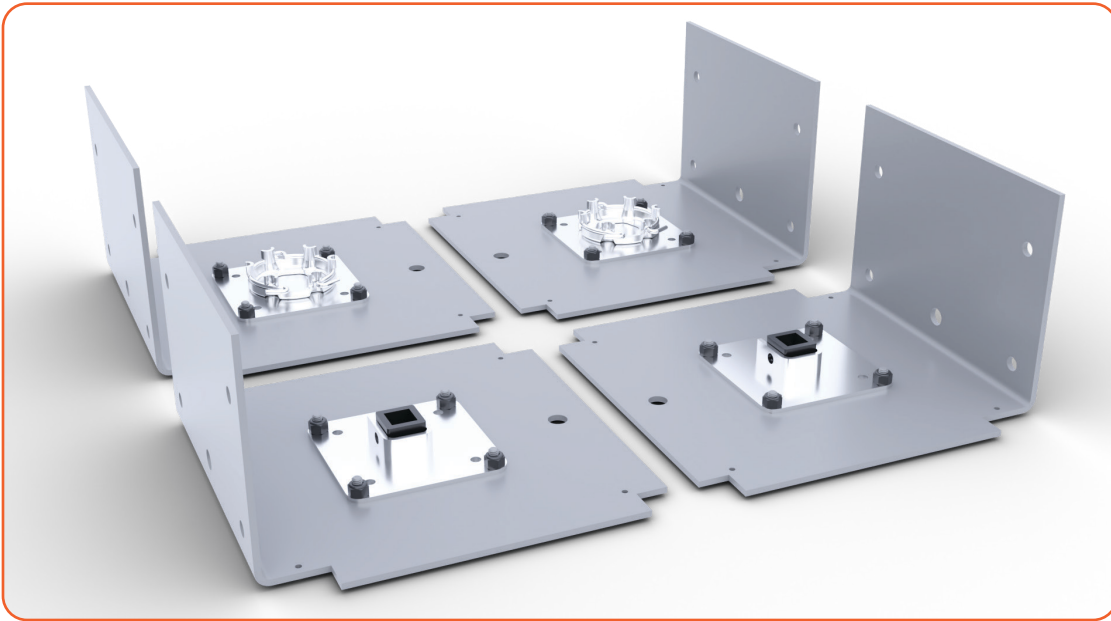
Material lift

BRACKETS: INSIDE THE BOX

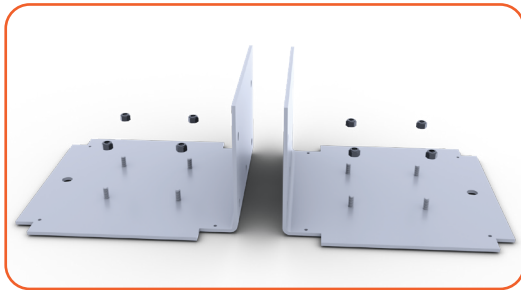


BRACKETS: INSTALLATION

END RESULT



INSTRUCTIONS



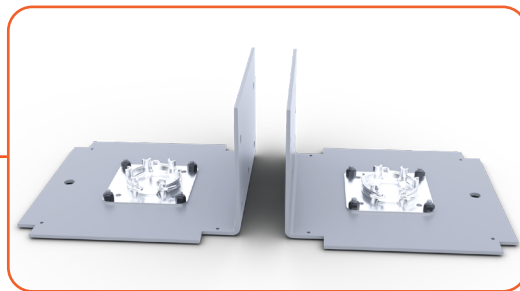
Remove the nuts



Insert the bracket

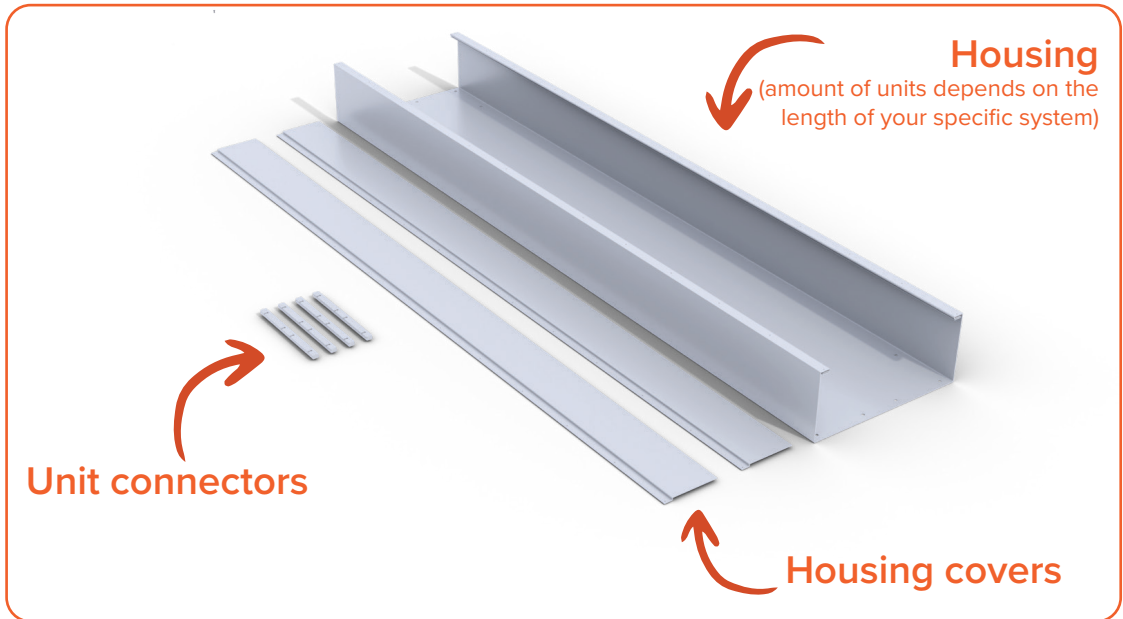
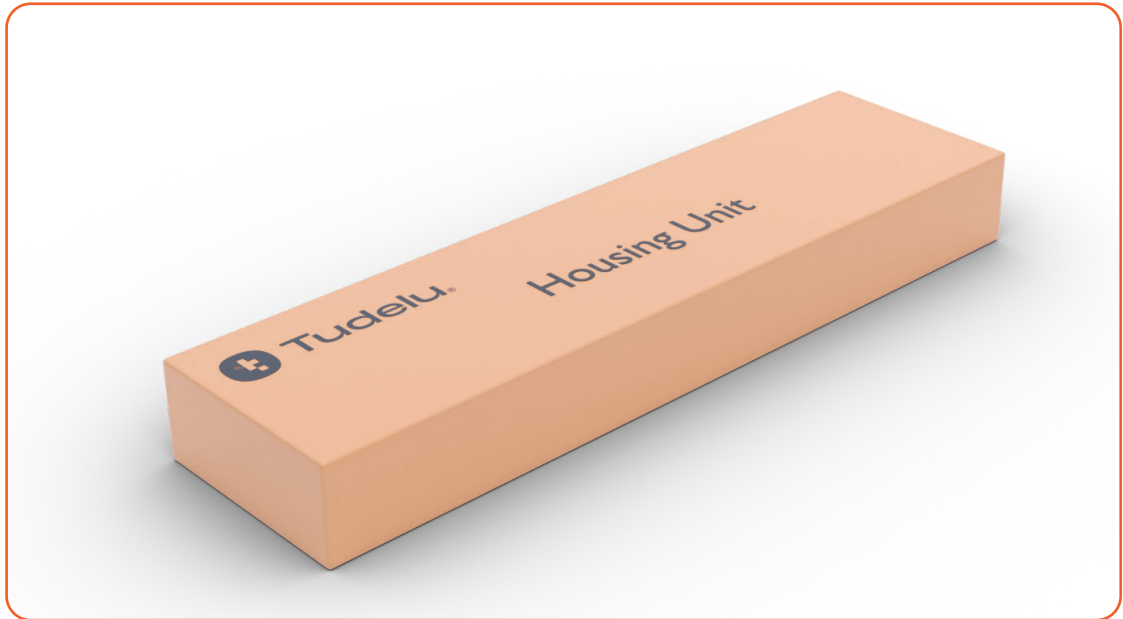


Tighten the nuts



Repeat for the motor bracket

HOUSING UNIT : INSIDE THE BOX

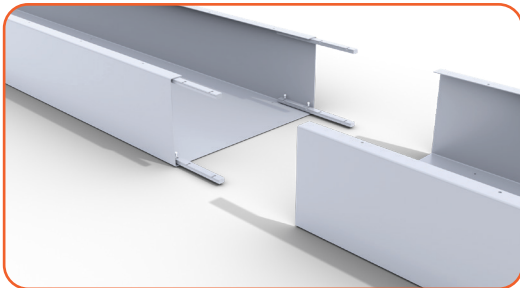


HOUSING UNIT : INSTALLATION

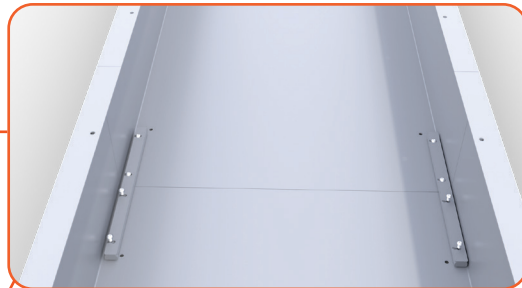
END RESULT



INSTRUCTIONS



Insert the housing connector



Connect the section housing



Lift up the housing



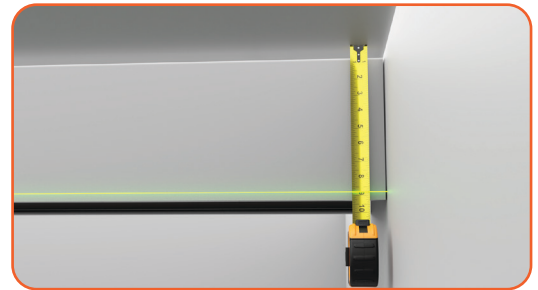
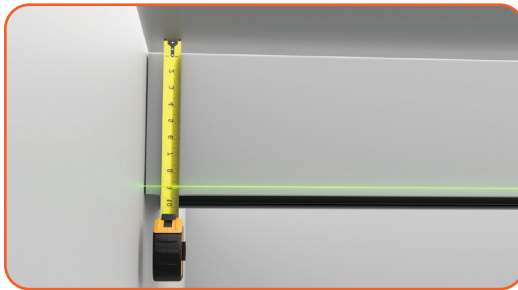
Insert screws into the ceiling

HOUSING UNIT : LASER CHECK

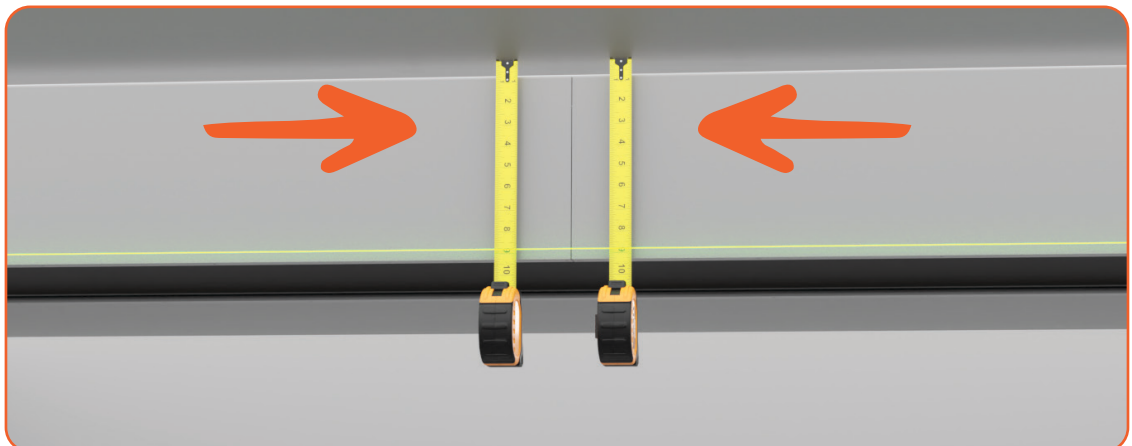
Note: It is extremely important that all housing units are the same exact height



Use the laser to ensure the housing units are leveled

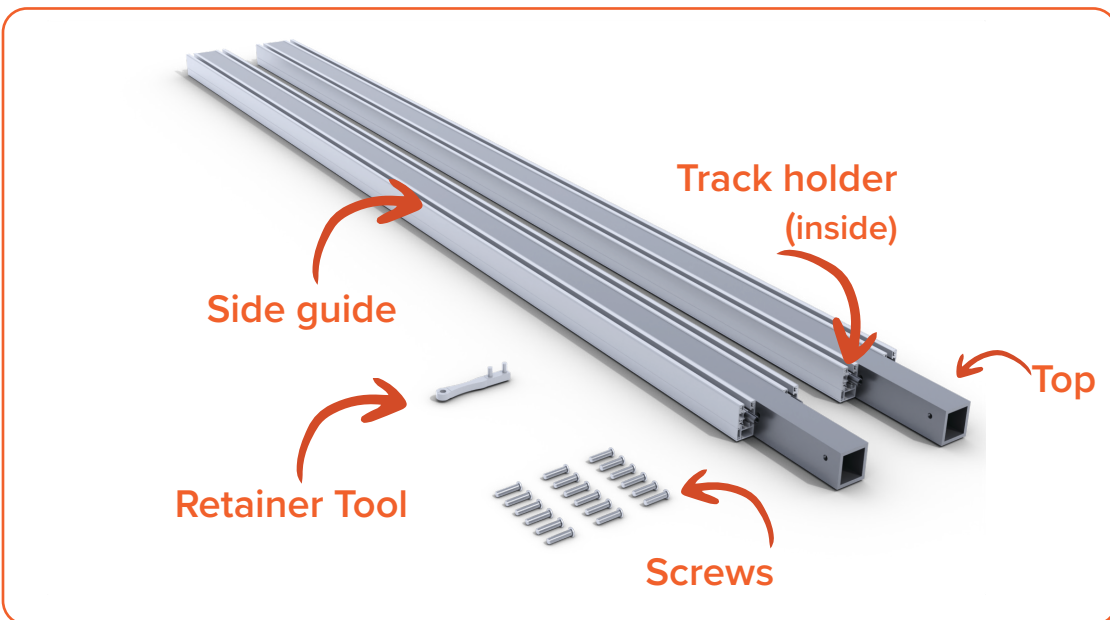
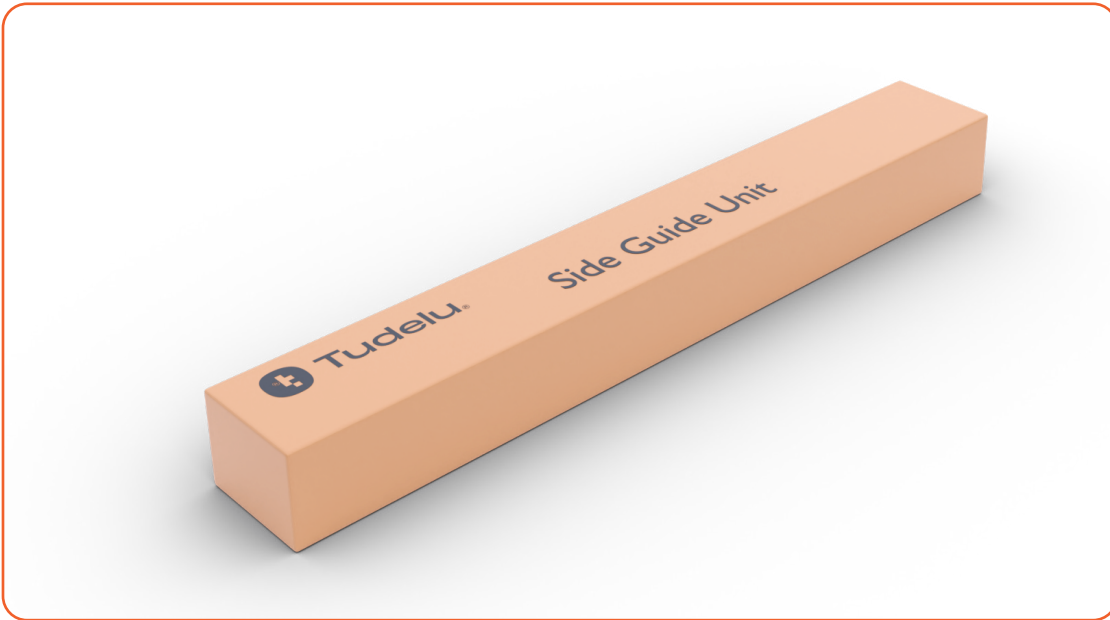


Double check both sides using a laser and a tape measurer



Make sure there is no space between the housing units

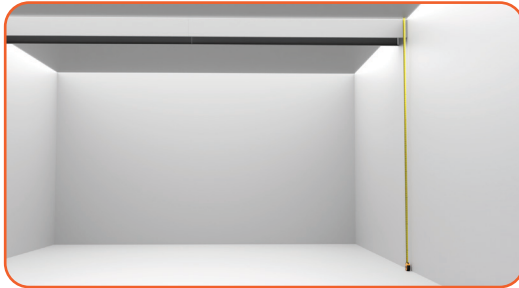
SIDE GUIDE : INSIDE THE BOX



When cutting make sure to cut from the bottom

SIDE GUIDE : INSTALLATION

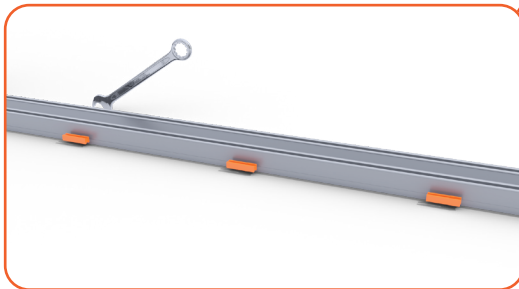
INSTRUCTIONS



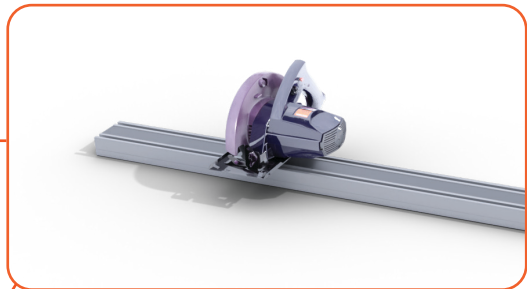
Using a tape measure, measure the exact height from the floor to the inside of the housing



Remove the track holders from side the guides and set them aside



Use a metal on the side guides as a guide to detect where the magnets are
Note: This is extremely important!



Use a saw to cut the side guides from the bottom to the correct size, making sure to avoid magnets



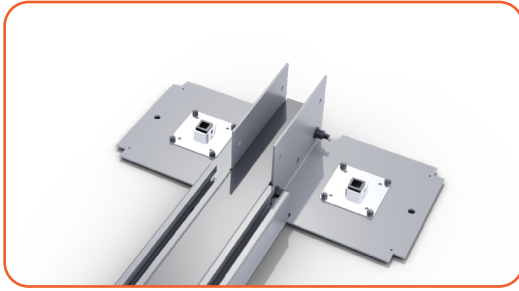
Make sure to measure from after the plastic



Use saw to cut track holders from the bottom to the correct size

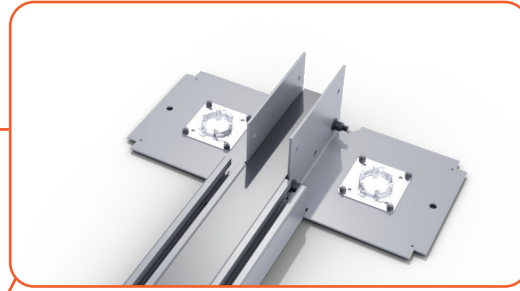
Before cutting make sure the magnets on the side guide is aligned with the magnets on the track holder
(Magnets could be moved if needed)

SIDE GUIDE : INSTALLATION



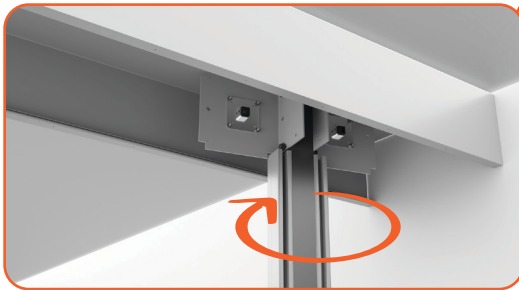
Connect the idler brackets to one side guide

NOTE: Make sure that the U shape are facing up



Connect the motor brackets to the other side guide

Note: This end will be closer to the room's power



Lift the side guides horizontally and rotate them against either side of wall



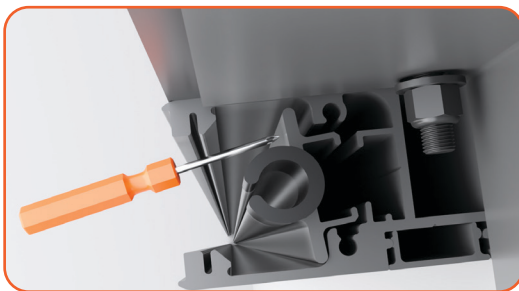
Make sure the side guides are leveled and perfectly aligned the with walls



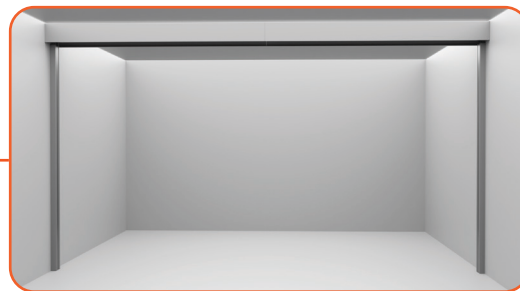
Insert the screws into the side guide and screw them into the wall



Slide the track holder into the side guides horizontally

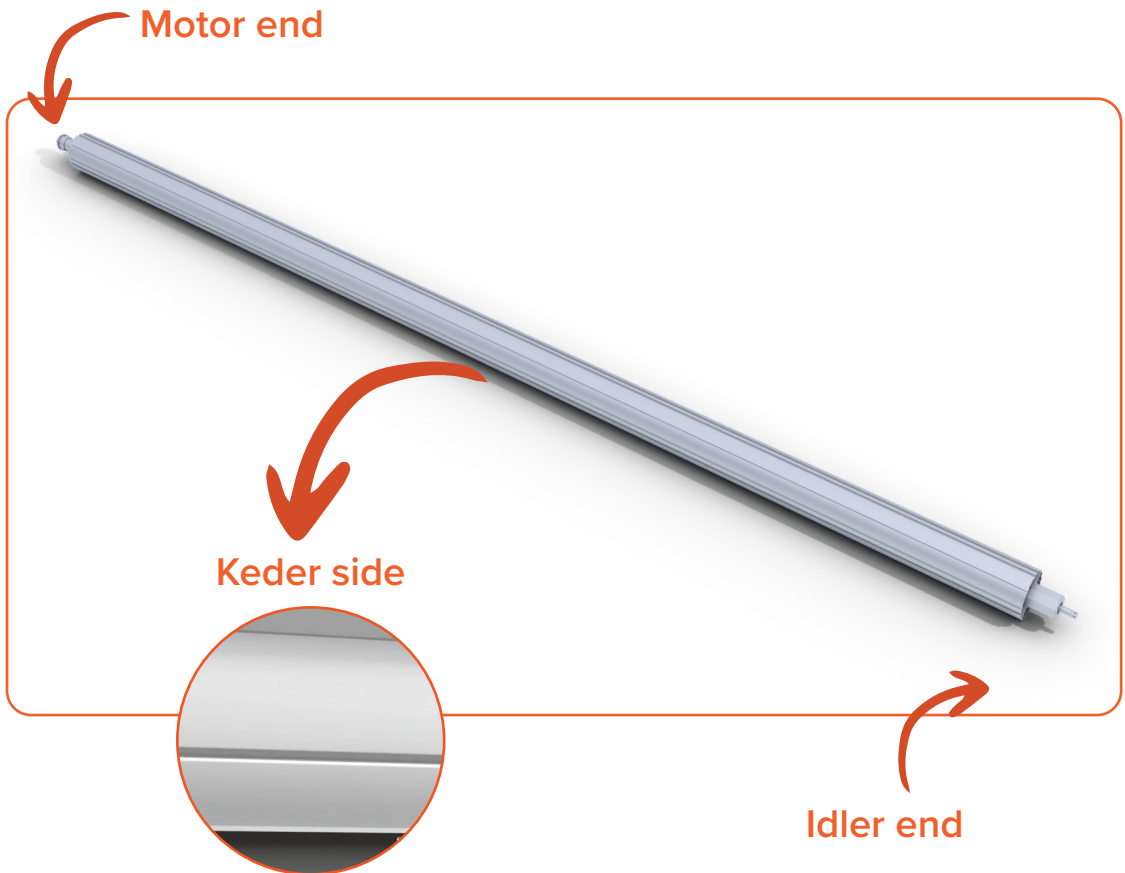
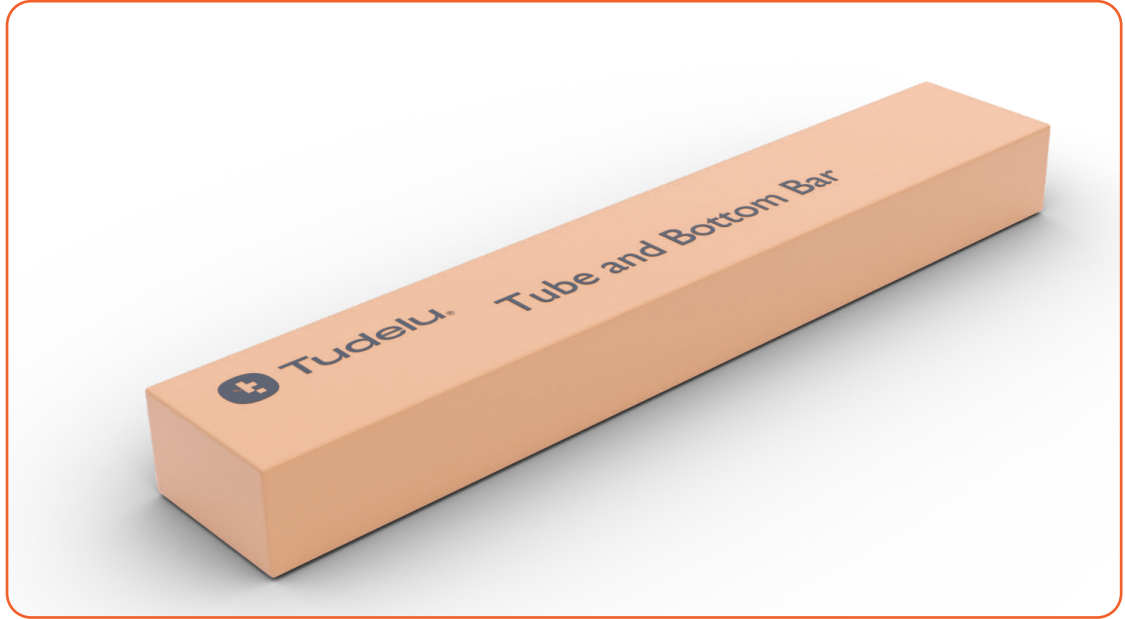


Use a screwdriver to prop track holders up



Repeat the previous steps on the other side

TUBE : INSIDE THE BOX

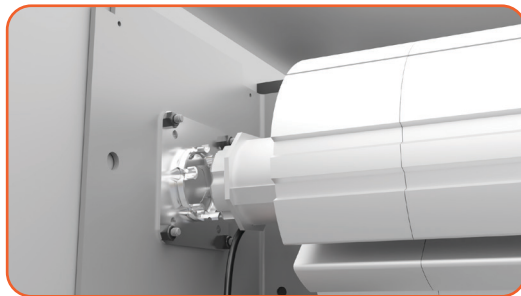


TUBE : INSTALLATION

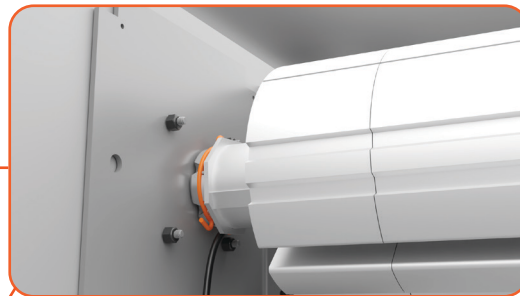
INSTRUCTIONS



Use a material lift to raise the tube to the housing system



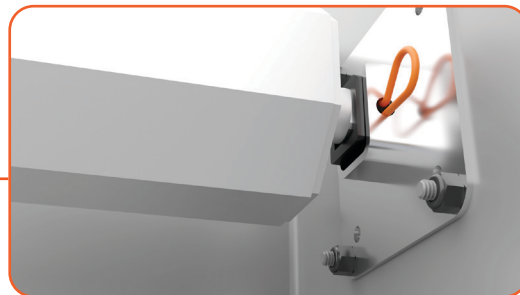
Insert the motor end of the tube into the motor bracket



Insert the pin to secure the tube
Note: Make sure the wire is Between the ends of the pin



Insert the idler end of tube into the idler bracket



Insert the pin to secure the tube

NOTE: Do not insert second tube till motoer limits are complet

Note: If you want the wire to hang on the side of the housing, bring it to the side now. Otherwise, leave the wire in the back.

REMOTE CONNECTION

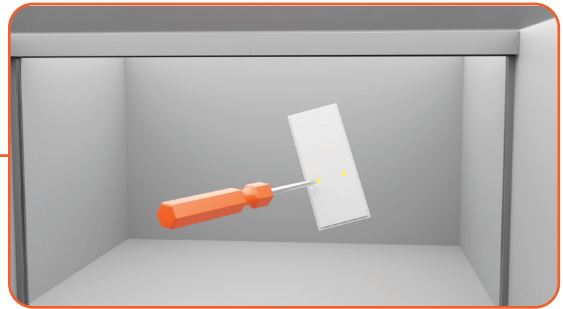
INSTRUCTIONS



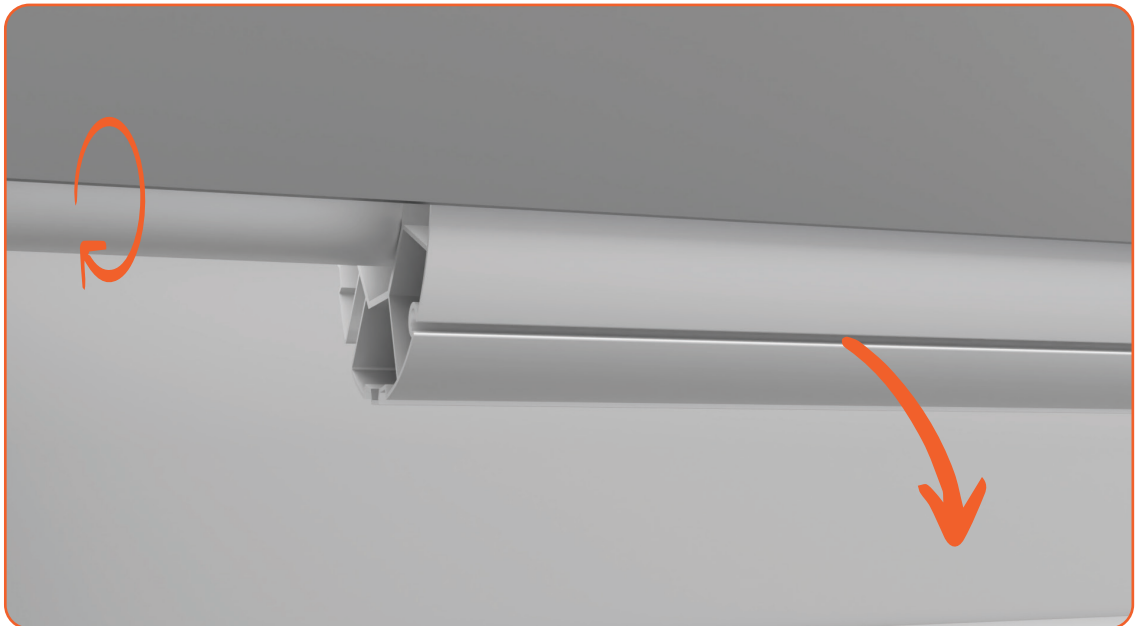
Connect the wire to the room's electricity



Hold the remote pointing towards the housing unit

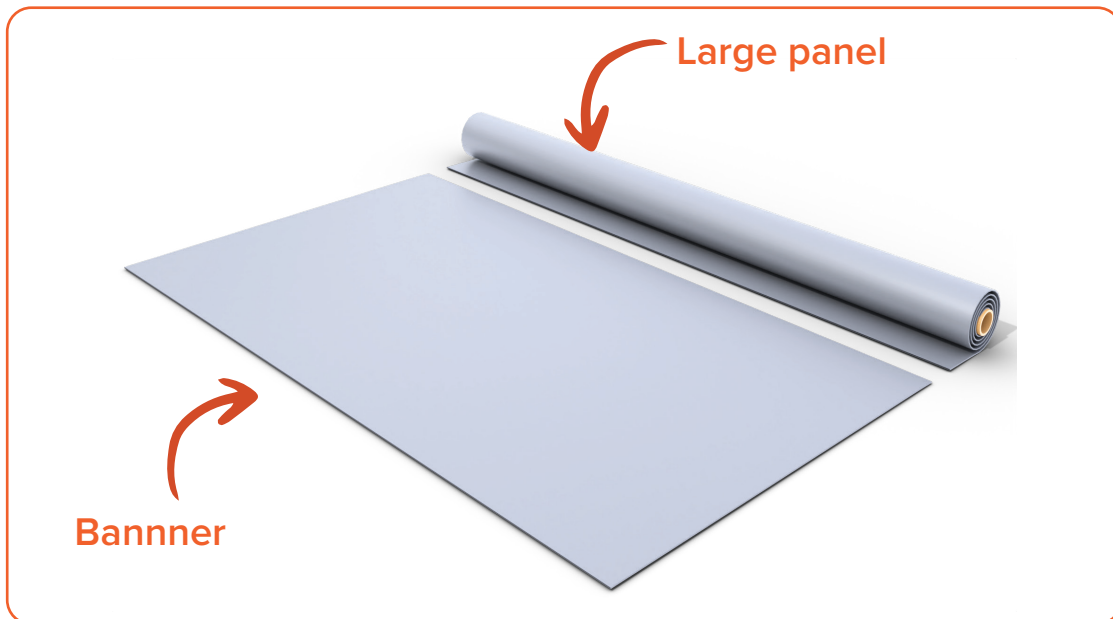


Turn the remote over and use a screwdriver to press the left sync button for 6 seconds
(motor will begin moving up and down)



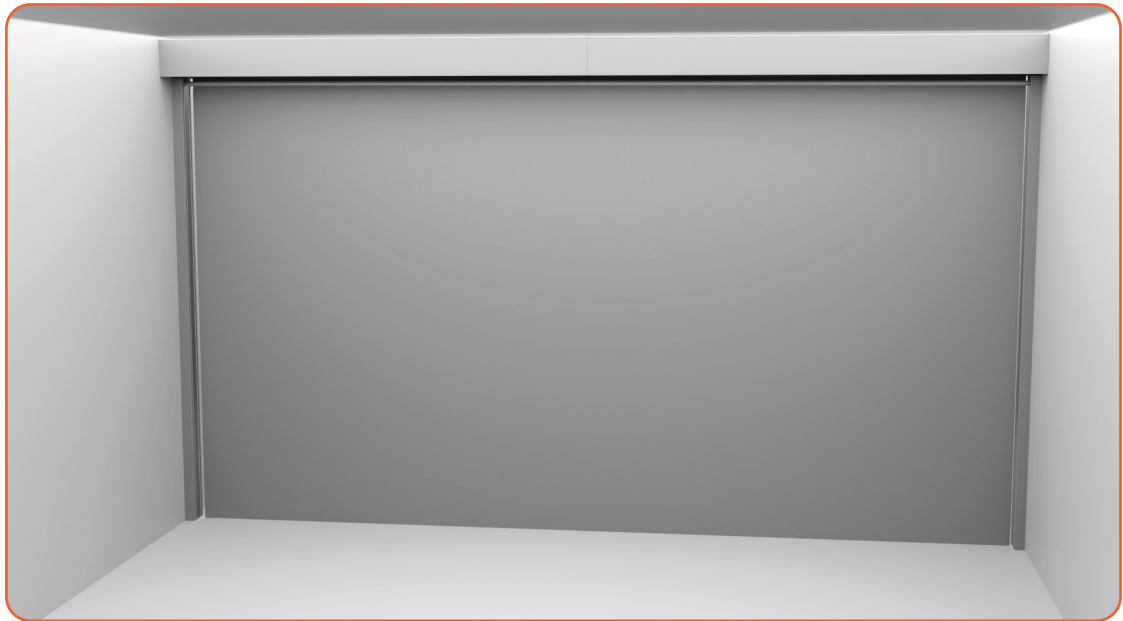
Use the up and down buttons to bring the keder side of tubes to the bottom

WALL PANEL : INSIDE THE BOX



WALL PANEL : INSIDE THE BOX

END RESULT



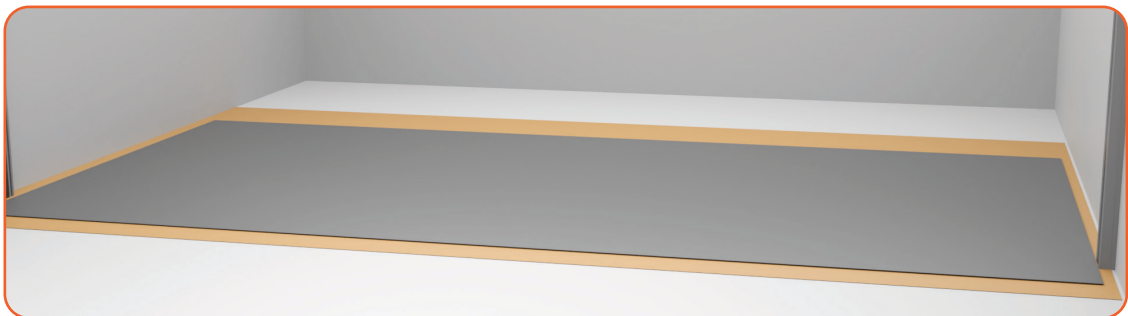
INSTRUCTIONS



Raise the Banner to the housing unit



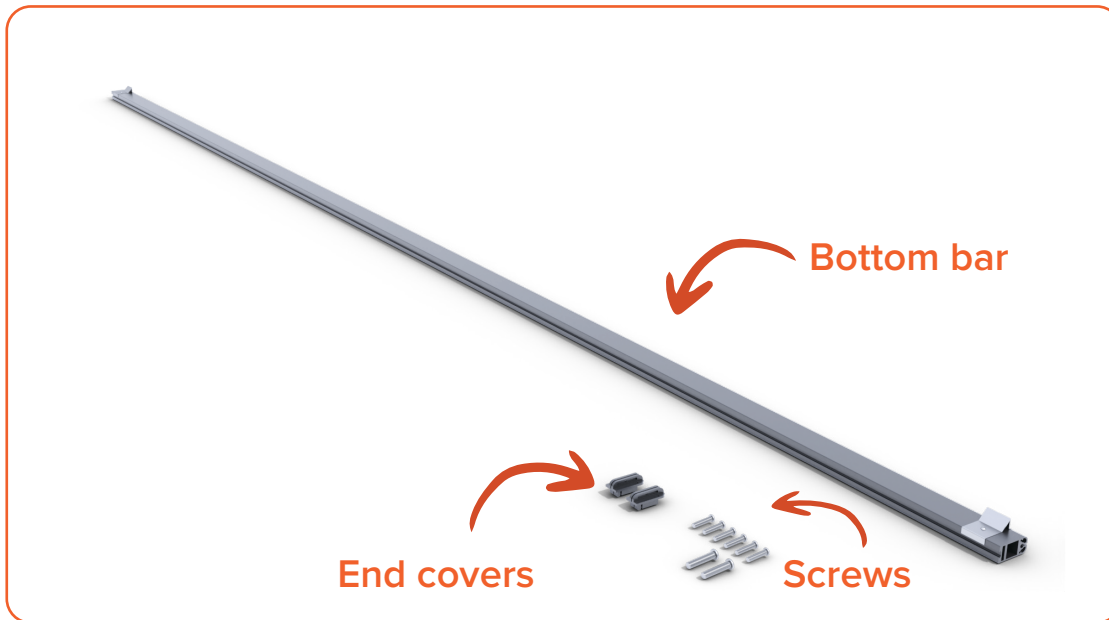
Slide the Banner into the keder side
of the tube
Note: Zipper must be hanging down



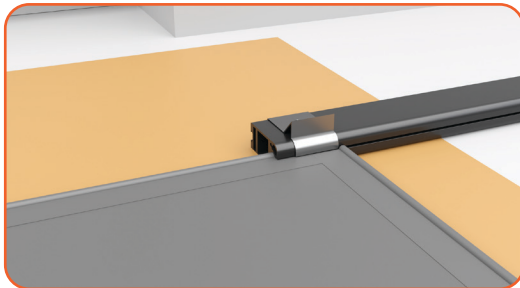
Roll out the wall panel and place roller on the keder side

Note: Before lifting the panel you are going to insert the bottom bar (see next page)

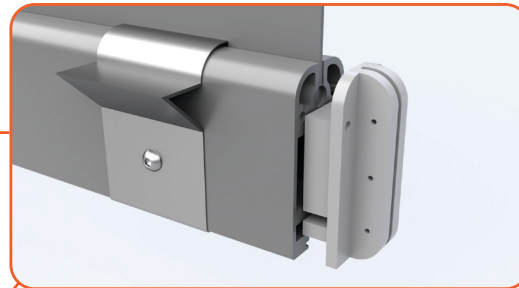
WALL PANEL : INSTALLATION



INSTRUCTIONS



Slide the bottom bar into the keder side of the large panel



Push the end covers into either sides of the bottom bar



Insert the screws to connect the end covers to the bottom bar

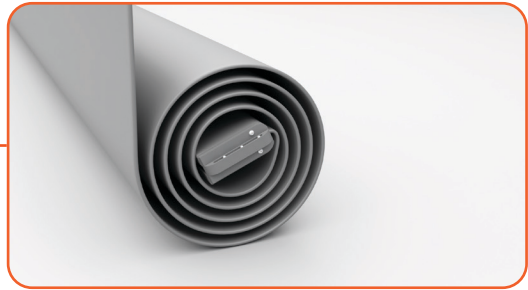
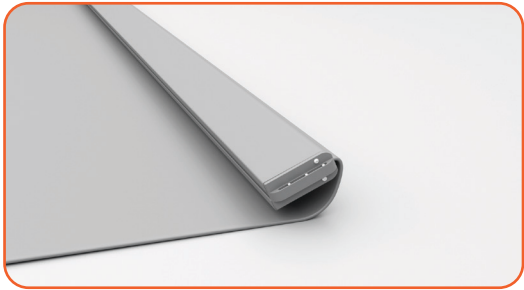


Make sure the keder is in between the end covers and screw into end cover

Note: Make sure the stoper are facing in

WALL PANEL : INSTALLATION

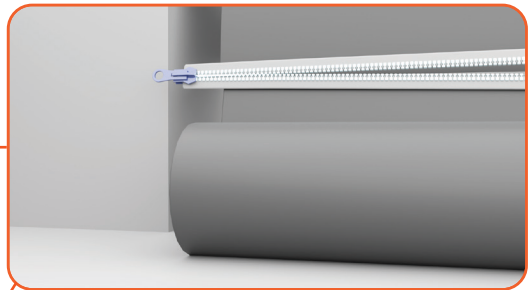
INSTRUCTIONS



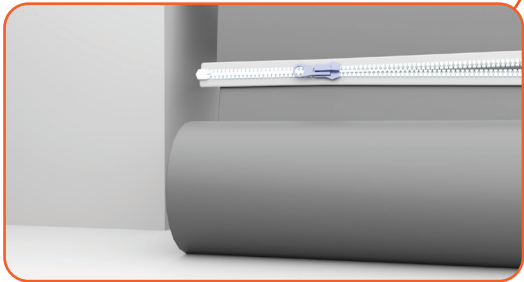
Roll the large panel with the bottom bar side facing in



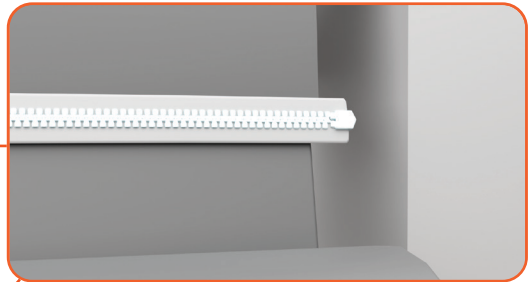
bring the wall panel to the banner and start zipping



Start zipping large panel to banner



insert stopper in beginning to secure connection



Zip all the way and insert stopper at the end



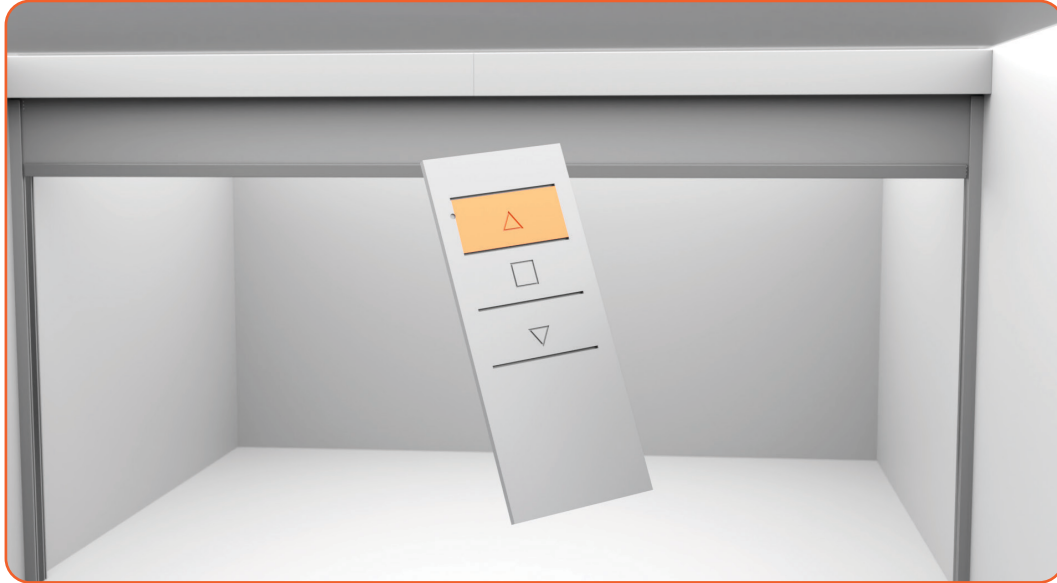
Roll up the wall panel before screwing the banner to the tube



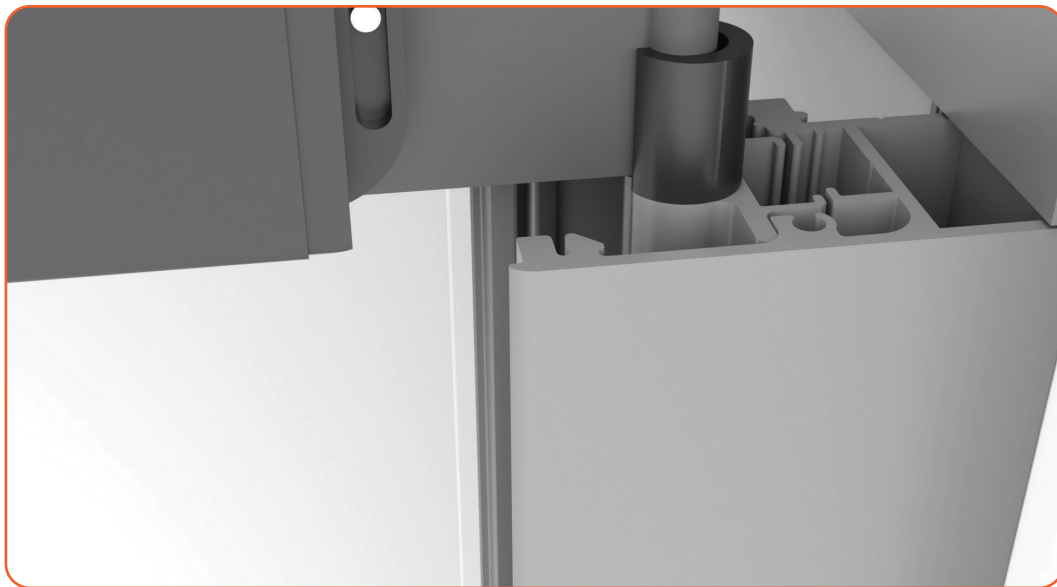
screw banner to the tube

WALL PANEL : INSTALLATION

INSTRUCTIONS



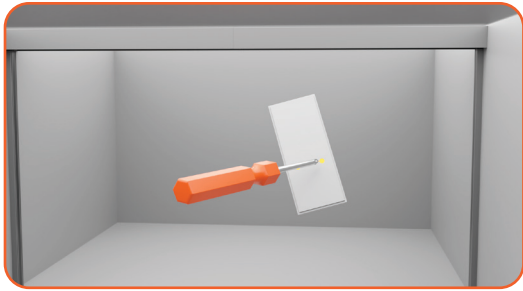
Use the remote to lift the wall panels all the way up



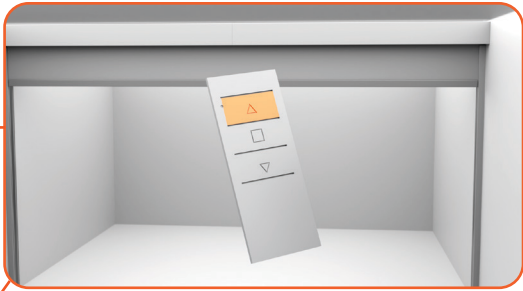
Slide the keder side of the wall panel into the keder side of the side guides

MOTOR LIMITS

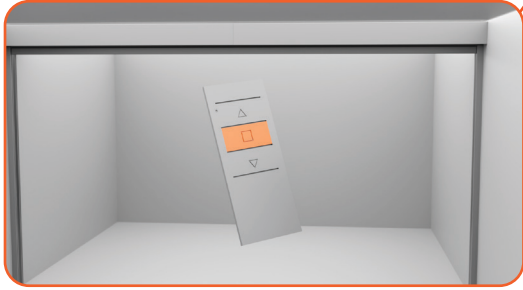
INSTRUCTIONS



Use a screwdriver to press the right limit button for 6 seconds



Use the up button to raise the wall panel until the desired height limit



Hold the stop button till it jogs



Use the down button to lower the wall panel to the desired height limit



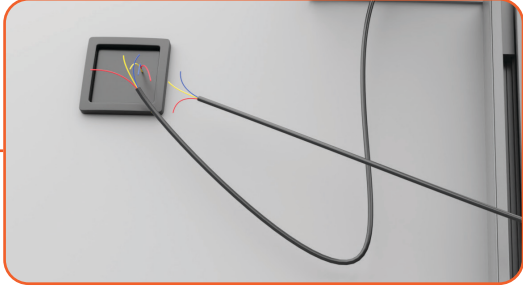
Hold the stop button till it jogs



Disconnect from power before setting up second tube



Repeat all the previous steps for the second wall panel

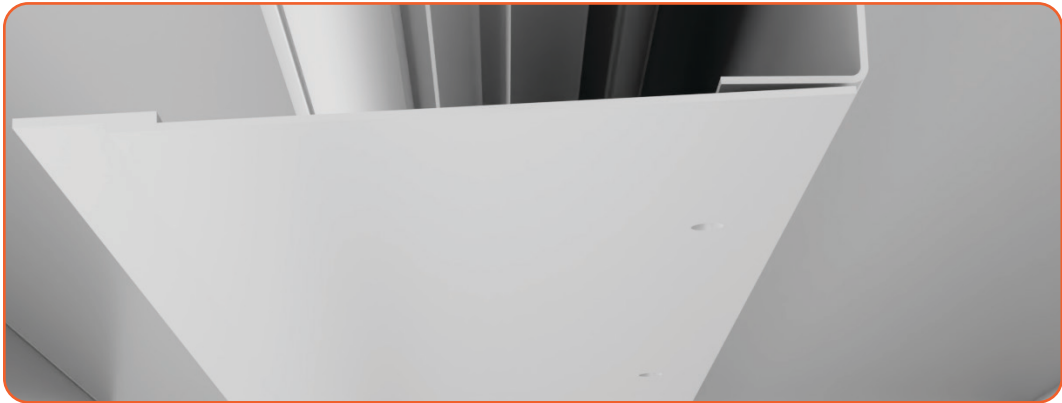


After setting up second wall panel connect back both to the power

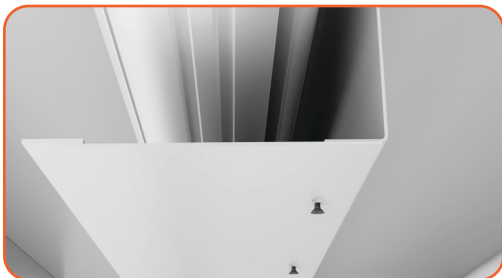
NOTE: Make sure when setting the motor limits for second wall panel that the first motor should not be connected to power

HOUSING COVER : INSTALLATION

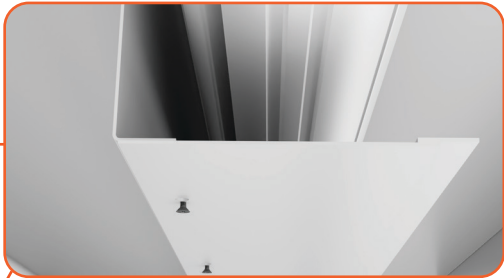
INSTRUCTIONS



Slide housing covers into the bottom of the housing unit



Insert the screws into the housing cover



Repeat the previous steps for other side



insert screws to connect remote holder into wall



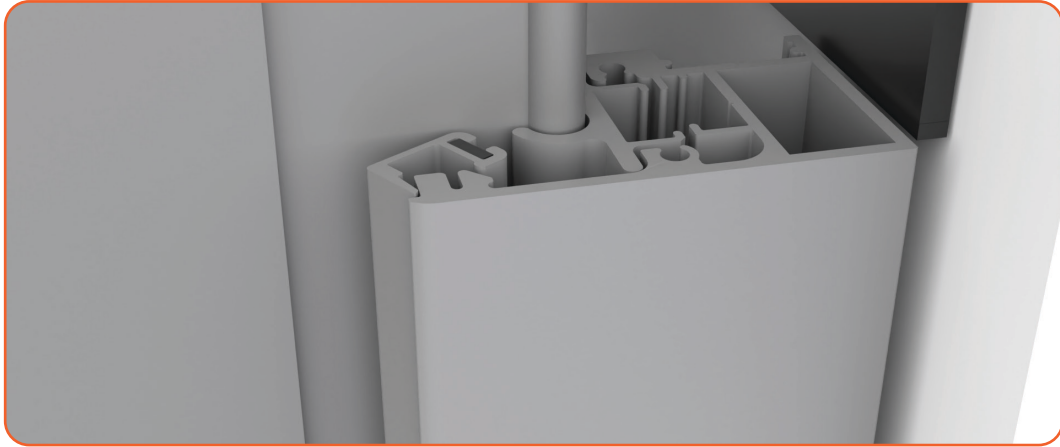
insert remote into the remote holder



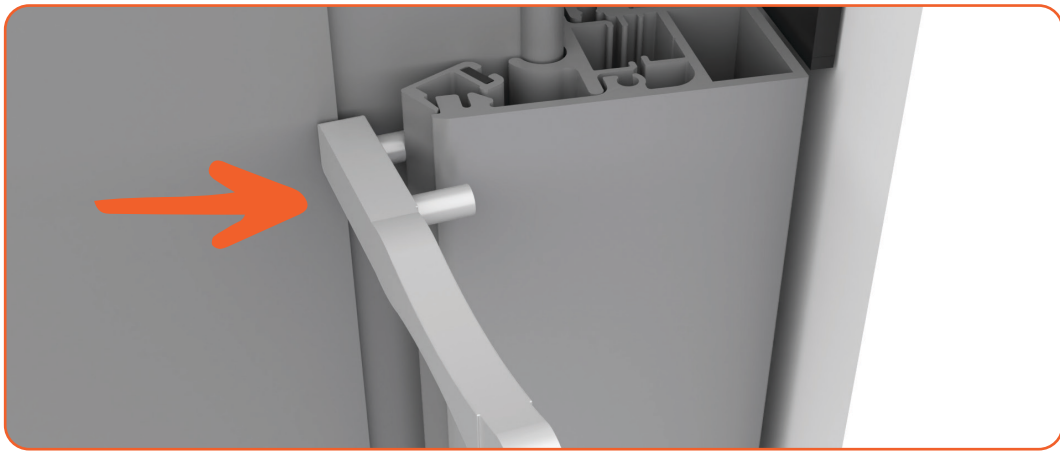
place remote holder cover

FINISHING BRUSH : INSTALLATION

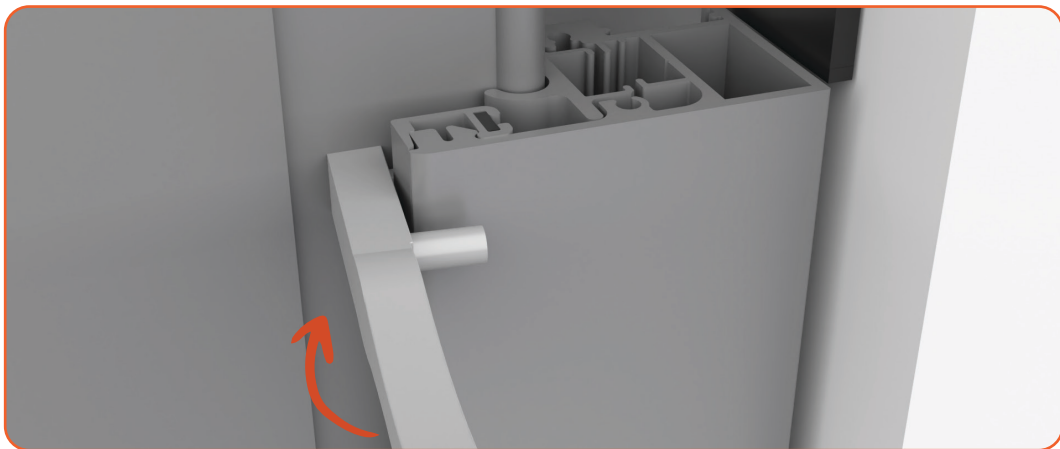
INSTRUCTIONS



Insert the finishing brush into the side guide



Insert the Retainer Tool



Rotate the Retainer Tool to complete the insert of the finishing brush

MOTOR PROGRAMMING

Gaposa Motor Programming

1. "Press and hold the SYNC button (left button on back) until the motor moves, check the direction and release the programming button, the motor will stop. "
2. "To synchronize the motor with the transmitter, press UP or DOWN. If in the previous step, the motor moved up, press the UP button. If in the previous step, the motor moved Down, press the DOWN button.

Transmitter is now programmed to the motor

3. Press and Hold the LIMIT button (right button on the back of the transmitter) until the motor makes a jog (a brief up and down Movement).
4. "IMPORTANT: THE ""UP"" LIMIT MUST ALWAYS BE SET FIRST
Press and hold the UP button until the ""UP"" limit is reached. "
5. When the "UP" limit is reached, press the STOP button. The motor will jog.
6. Press and hold the DOWN button until the "DOWN" limit is reached.
7. When the "DOWN" limit is reached, press the STOP button. The motor will jog.

Limit Program is Now Complete. The motor will operate normally

Notes

- Remember the direction the motor has moved. That Information is needed for the next step.
- If the Direction of rotation is incorrect, it will need to be corrected before the limits are set.
- when in limit setting mode the motor operates in deadman control, meaning you must press and hold UP button to get the motor to move.
- The "UP" limit is set when the motor jogs.
- when in limit setting mode the motor operates in deadman control, meaning you must press and hold DOWN button to get the motor to move.
- The "UP" limit is set when the motor jogs.

MOTOR PROGRAMMING

To Change UP/DOWN Direction

Press and hold the SYNC button (left button on back) until the motor moves and then Press the Stop Button.

To Reset ONLY The UP Limit

Press and hold the Limits button (Right button on back) and UP Button at the same time until the Motor Jogs

Set The UP Limit And then Press the Stop Button, The motor will Jog Again.

Now your Up Limit is Now Set.

To Reset ONLY The Down Limit

Press and hold the Limits button (Right button on back) and DOWN Button at the same time until the Motor Jog

Set The DOWN Limit And then Press the Stop Button, The motor will Jog Again.

Now your DOWN Limit is Now Set.

What To Do If The Motor Is Over Heated

Wait until the Motor Cools Down (Approximately 25-35 Minutes)

After Waiting, It should Operate Perfectly

What To Do If The Motor Isn't Responding

If the Motor is Not Responding At All, Not Even With The Remote. Then It Will Need To Be Hard Reset Manually.

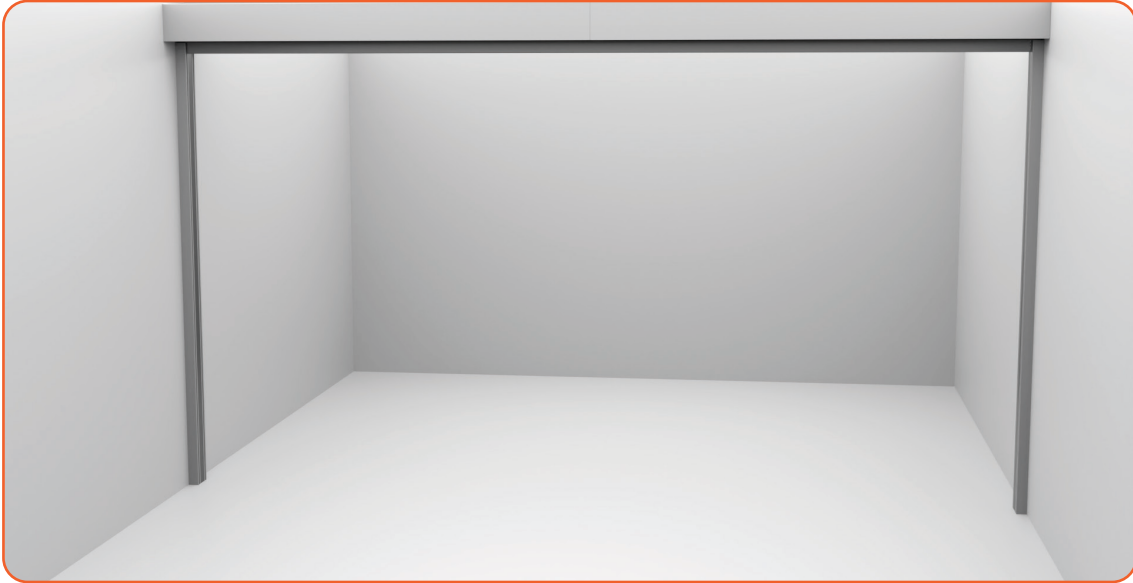
To Hard Reset The Motor, You Need To Press The Reset Button On The End Of The Motor until the Motor Response and Jogs.

(The Reset Button is a White Button At The End Of The Motor)

After Doing So, The Motor Will Need To Be Re- Programmed.
(Follow The Programming Steps)

CONGRATULATIONS ON YOUR MASTERPIECE!

View with partition raised



View with partition lowered

